

BREAD^{LTD}

///
Eighth Floor,
6 New Street Square,
New Fetter Lane
www.breadltd.com

///
Sarat Babu
+44(0)7738238993
sarat@breadltd.com

Palaces Material Testing

Glue Dipping & Mesh Sewing

CLIENT

GINA CZARNECKI

DATE

24/03/2010

AUTHOR

SARAT BABU

/// GLUE DIPPING & MESH SEWING: SUMMARY & RESULTS

This document has been prepared in response to a request for a proposal from Gina Czarnecki & Kamal Ackarie to evaluate a process of mesh dipping in order to increase bondable surface area for teeth fixation to a metallic mesh.

Two types of sculpting mesh that had been selected by the Gina were dipped in a range of glues Flexbond (both concentrated and diluted), UHU, Hi-Tack & Copydex. Teeth were then glued onto the mesh using the same selection of adhesive agents.

In addition we provide a few sewed mesh samples to illustrate options to join mesh elements. It should be noted that the process is fairly labour intensive, excessively so with certain meshes.

/// GLUE DIPPING: RESULTS

What we found from our experiments is as followed:

- > **Poor Consistency** which includes:
 - > **Pooling** : Varying thickness of glue surface which is noticeable and difficult to control,
 - > **Bubbles** : Trapped Air in the dipped surface shows bubbles,
 - > **Visual Quality** : Most glues never quite achieve 100% transparency, milky white appearance, in the case of copydex, mottled yellow.
- > **Dipped adhesive effect adhesive for teeth** : Whichever adhesive the mesh is dipped in must also be used to glue the teeth to the surface in order to get a decent bond.

We believe due to these outcomes that it is unadvisable to use a dipping system and that a more select mesh with our recommended cyanoacrylate with accelerator spray remains the best option for attachment.

BREAD^{LTD}

///
Eighth Floor,
6 New Street Square,
New Fetter Lane
www.breadltd.com

///
Sarat Babu
+44(0)7738238993
sarat@breadltd.com

**///
FINE MESH DIPPED IN 100% FLEXBOND**

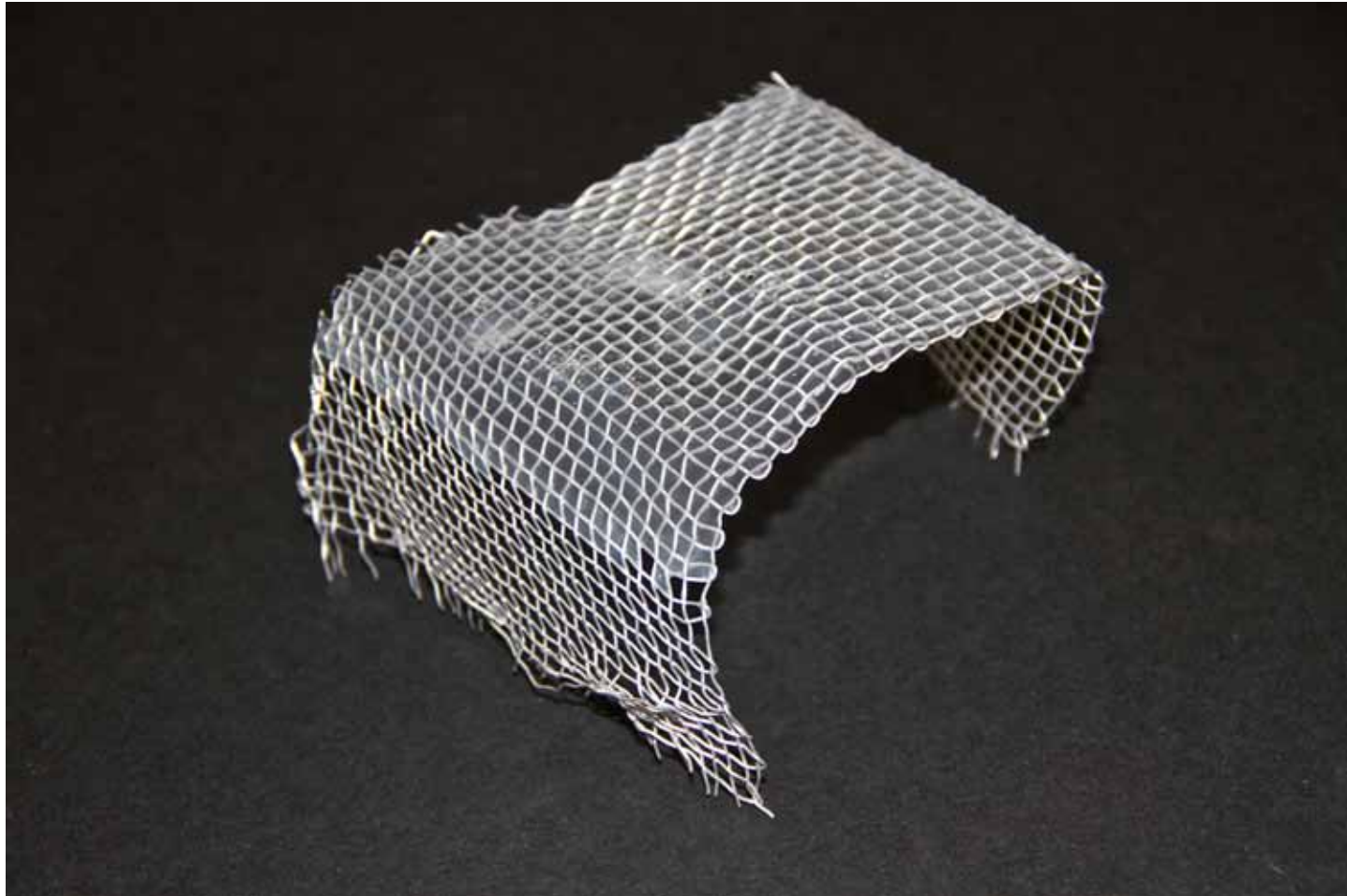


BREAD^{LTD}

///
Eighth Floor,
6 New Street Square,
New Fetter Lane
www.breadltd.com

///
Sarat Babu
+44(0)7738238993
sarat@breadltd.com

**///
COARSE MESH DIPPED IN 100% FLEXBOND**



BREAD^{LTD}

///
Eighth Floor,
6 New Street Square,
New Fetter Lane
www.breadltd.com

///
Sarat Babu
+44(0)7738238993
sarat@breadltd.com

**///
FINE MESH DIPPED IN 50% FLEXBOND 50% WATER**

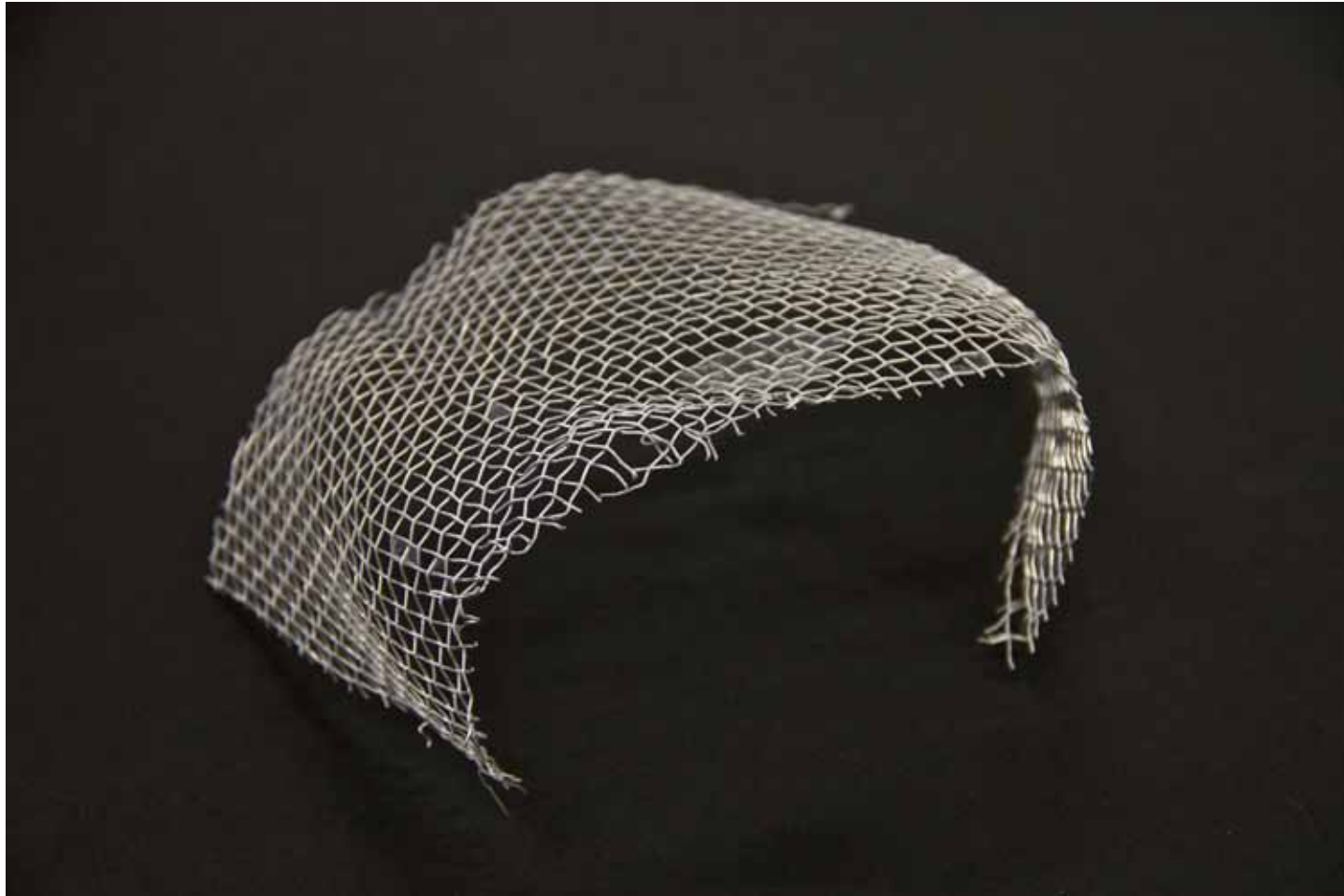


BREAD^{LTD}

///
Eighth Floor,
6 New Street Square,
New Fetter Lane
www.breadltd.com

///
Sarat Babu
+44(0)7738238993
sarat@breadltd.com

**///
COARSE MESH DIPPED IN 50% FLEXBOND 50% WATER**



BREAD^{LTD}

///
Eighth Floor,
6 New Street Square,
New Fetter Lane
www.breadltd.com

///
Sarat Babu
+44(0)7738238993
sarat@breadltd.com

**///
COARSE MESH DIPPED IN HI-TACK**

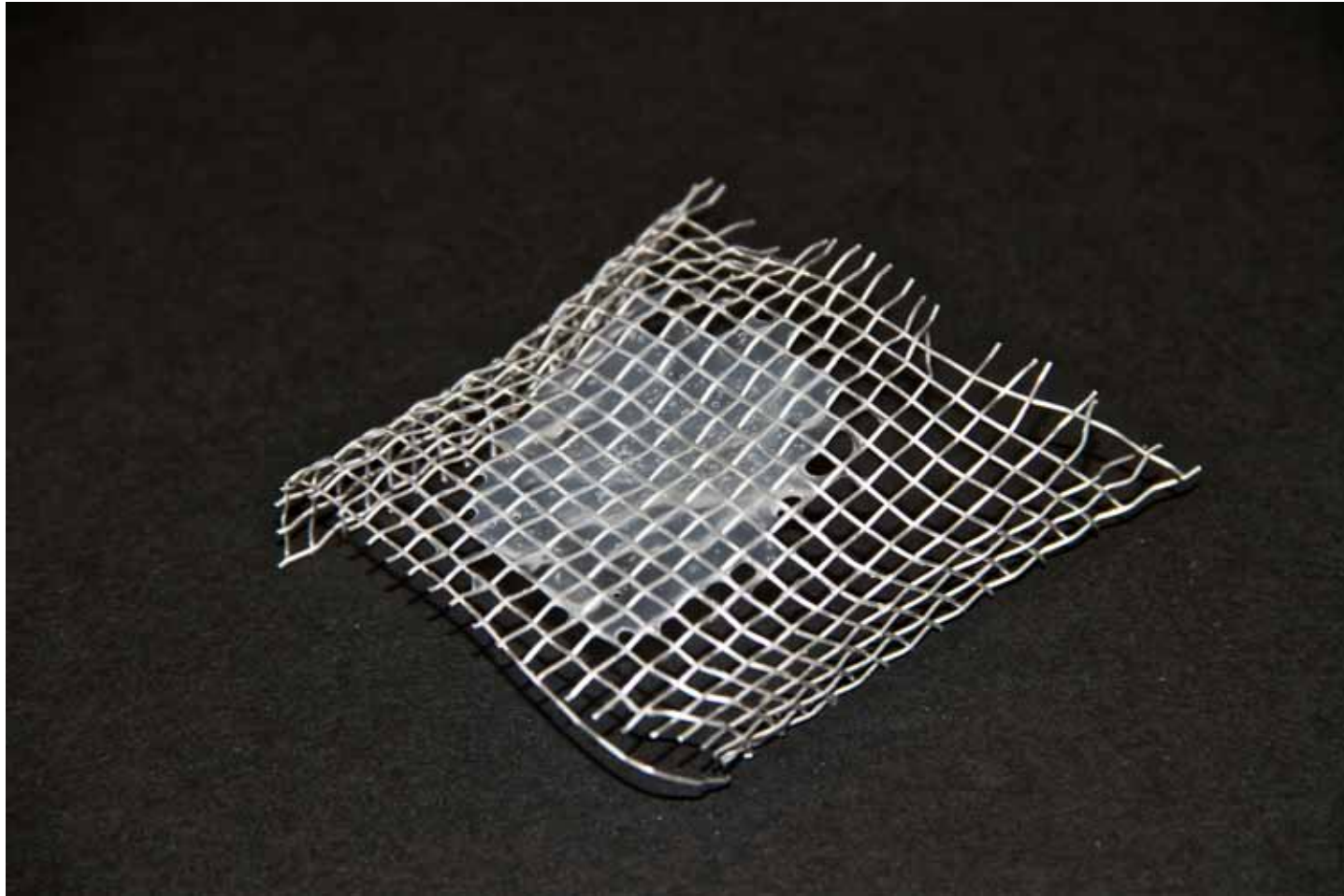


BREAD^{LTD}

///
Eighth Floor,
6 New Street Square,
New Fetter Lane
www.breadltd.com

///
Sarat Babu
+44(0)7738238993
sarat@breadltd.com

**///
COARSE MESH DIPPED IN HI-TACK**



BREAD^{LTD}

///
Eighth Floor,
6 New Street Square,
New Fetter Lane
www.breadltd.com

///
Sarat Babu
+44(0)7738238993
sarat@breadltd.com

**///
FINE MESH DIPPED IN UHU**

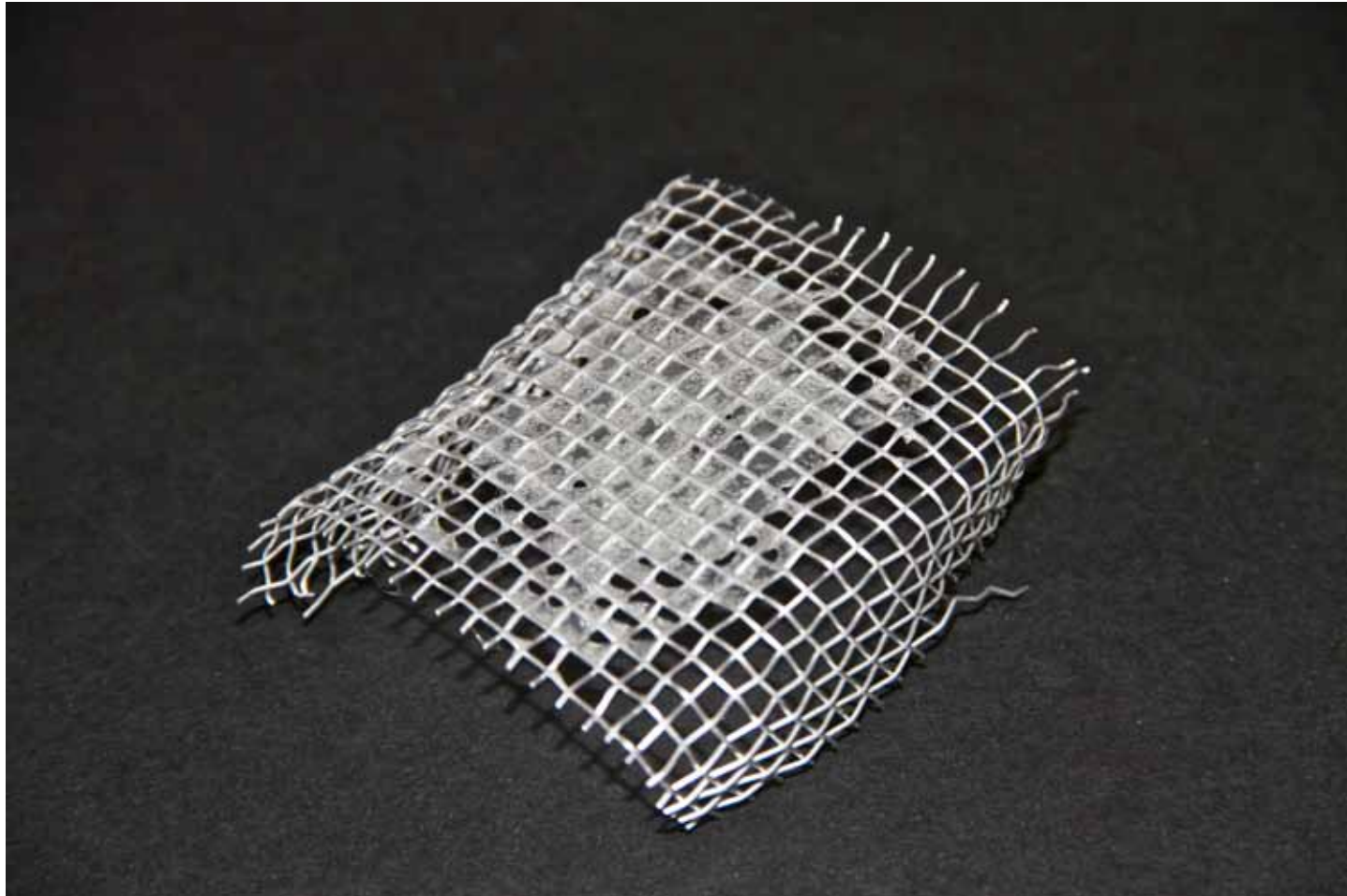


BREAD^{LTD}

///
Eighth Floor,
6 New Street Square,
New Fetter Lane
www.breadltd.com

///
Sarat Babu
+44(0)7738238993
sarat@breadltd.com

**///
COARSE MESH DIPPED IN UHU**



BREAD^{LTD}

///
Eighth Floor,
6 New Street Square,
New Fetter Lane
www.breadltd.com

///
Sarat Babu
+44(0)7738238993
sarat@breadltd.com

**///
FINE MESH DIPPED IN COPYDEX**

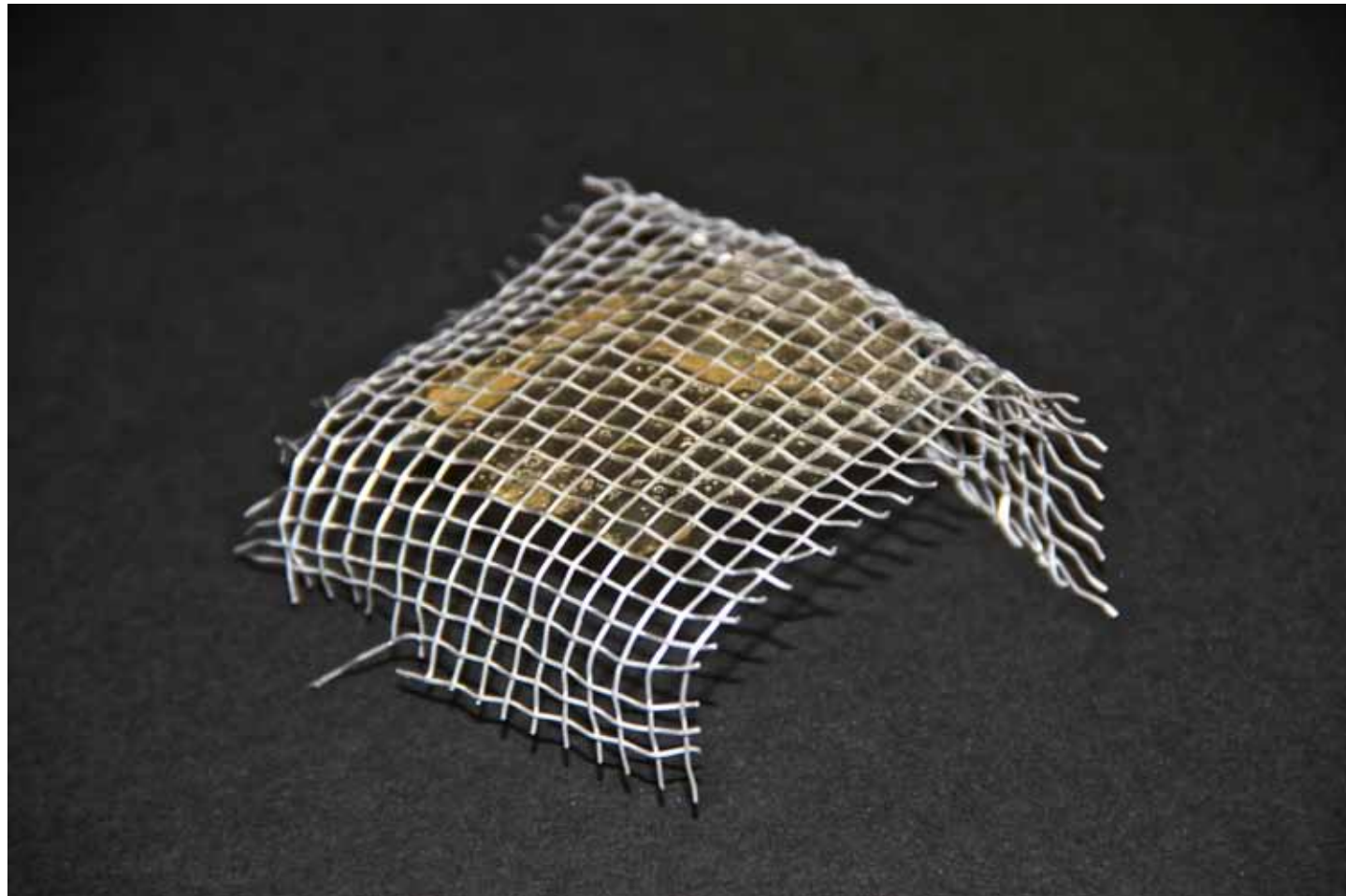


BREAD^{LTD}

///
Eighth Floor,
6 New Street Square,
New Fetter Lane
www.breadltd.com

///
Sarat Babu
+44(0)7738238993
sarat@breadltd.com

/// COARSE MESH DIPPED IN COPYDEX



BREAD^{LTD}

///
Eighth Floor,
6 New Street Square,
New Fetter Lane
www.breadltd.com

///
Sarat Babu
+44(0)7738238993
sarat@breadltd.com

**///
SEWED COPPER MESH**



BREAD^{LTD}

///
Eighth Floor,
6 New Street Square,
New Fetter Lane
www.breadltd.com

///
Sarat Babu
+44(0)7738238993
sarat@breadltd.com

/// **SEWED FOAM**

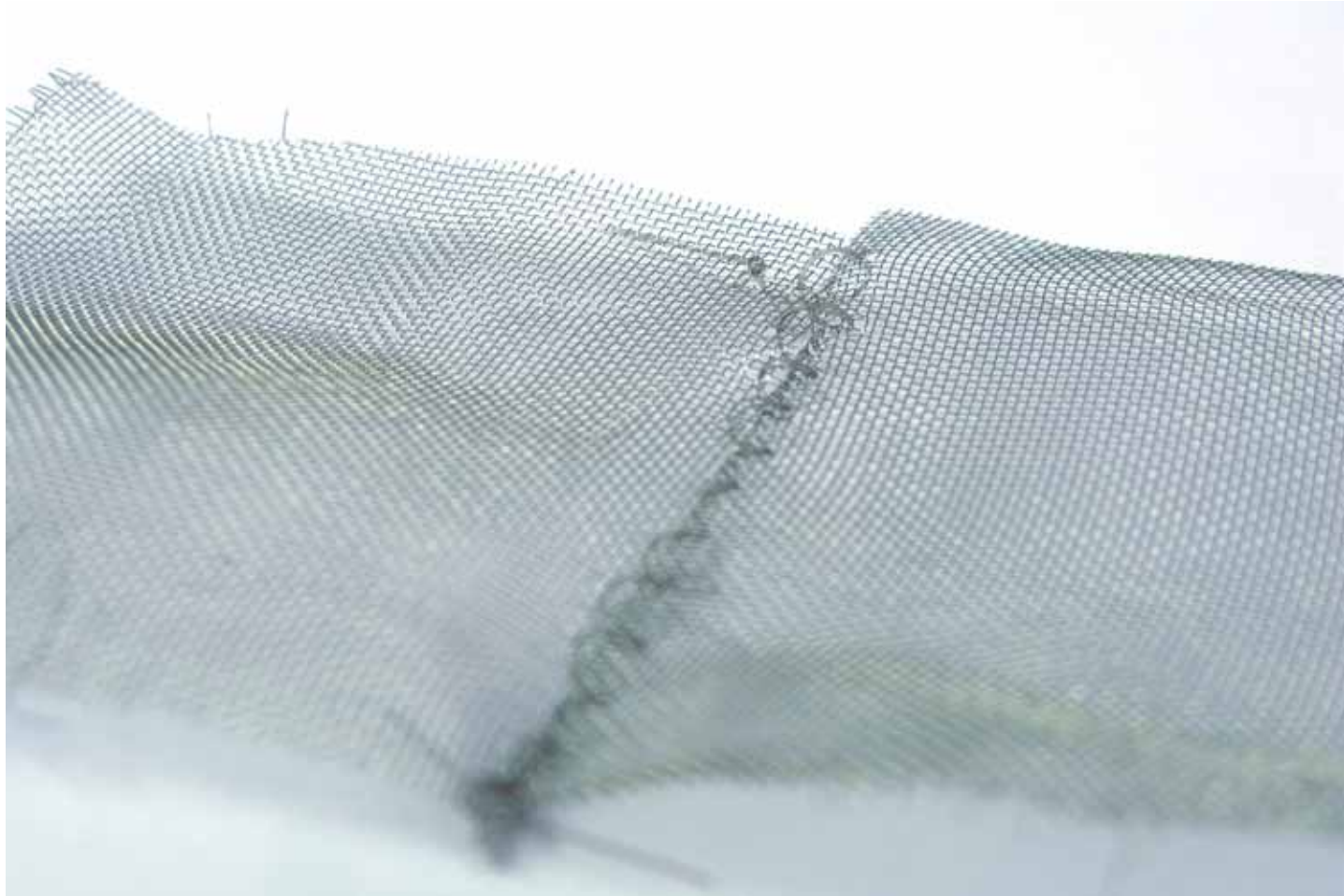


BREAD^{LTD}

///
Eighth Floor,
6 New Street Square,
New Fetter Lane
www.breadltd.com

///
Sarat Babu
+44(0)7738238993
sarat@breadltd.com

**///
SEWED FINE MESH**



BREAD^{LTD}

///
Eighth Floor,
6 New Street Square,
New Fetter Lane
www.breadltd.com

///
Sarat Babu
+44(0)7738238993
sarat@breadltd.com

**///
SEWED RIVULET MESH**

